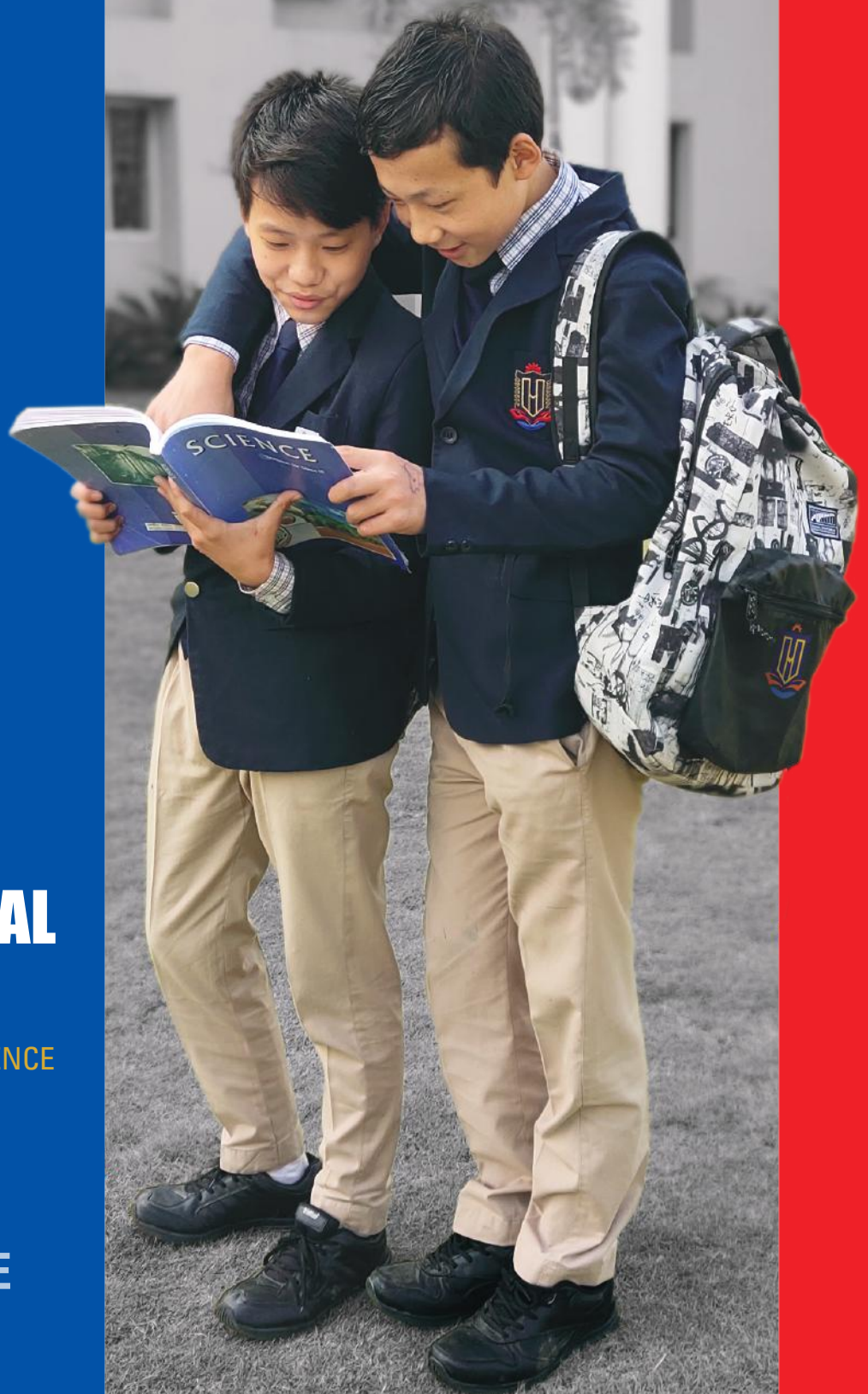




HIM **INTERNATIONAL SCHOOL**

A SCHOOL WITH A DIFFERENCE

a PROMISE
to the FUTURE



WELCOME



Chairperson
Mrs Nannu Wahge



Principal
Dr Maneesh Mangal

WELCOME TO HIMIS

Quality education is the natural right of every child. At HIMIS learning is leading a child to dream, and to realise the dreams through the right development of their potentials to transform oneself, her/his immediate environment, and the world. We believe education is reformatinal in which the individual is transformed not merely into ethical citizens but also as mature leaders who can make a difference in others' lives. HIMIS is envisioned to be a centre of excellence to carve out the best in every child to its fullest development through professionally developed curriculum and carefully chosen strategies. The architectural design and build-up are carefully selected to provide an exclusive image of the aesthetic grandioseness of the campus to those who come in. We would like to welcome all to this serene and secure ambiance and assure that it would be an ideal edifice and ground for any student to live and learn.

MESSAGE

The school is not merely a building nor is it just a place where people come and go for various purposes. At HIMIS, we believe that it is a HOME, where life is nurtured and flourished, a house where pupils enjoy the life which is full of joy, choices and great opportunities for their growth and development – physical, intellectual, emotional and artistic. We believe that a blend of homely atmosphere and competitive environment is the best setting for the pupils to develop their existing potentials to the maximum. Our educational programmes and developmental strategies are modified to suit the National Education Policy and the changing world of competitiveness. Apart from the traditional subjects, our programme includes the essentials of artificial intelligence and coding right from the foundational years. Hence HIMIS is a place where each child will be enabled to identify his or her unique qualities, to realise the true potential, and to fulfil the aspirations that undergo constructive changes. We welcome the young ones of all nationalities to make their best choice by entering this edifice of knowledge.

VISION

HIM International School is a nurturing ground for the holistic development of each individual, in a consistently conducive environment, inculcating a blend of indigenous and universal values, to make effective contributions to the society and thereby to become authentic humans.

MISSION

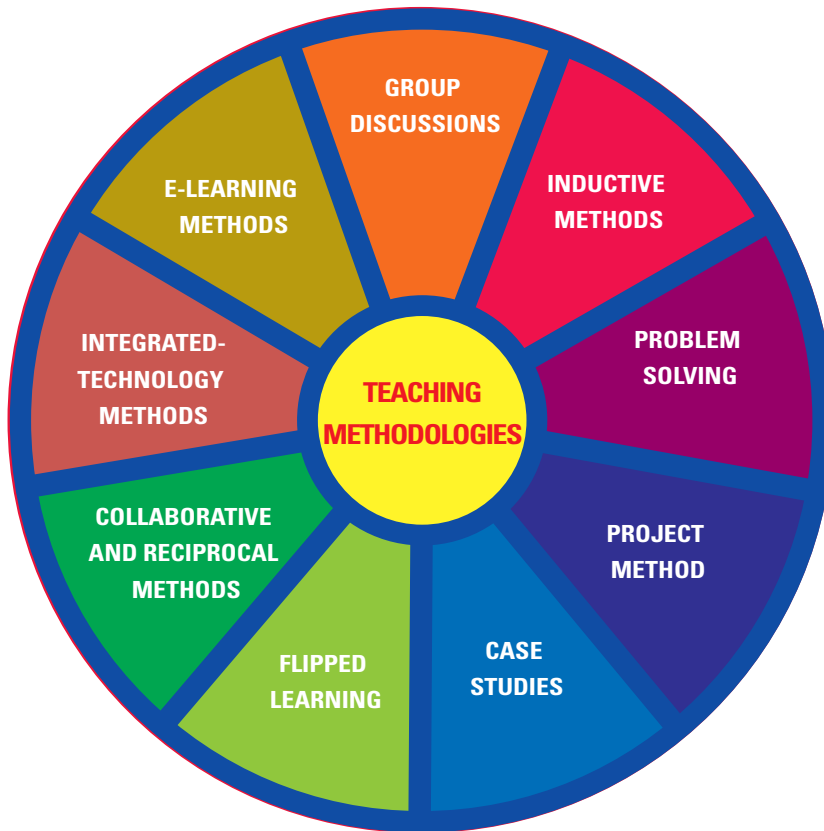
HIM International School strives to lead its pupils through excellence in everything it embarks upon by providing them a design and approach which presuppose creativity, innovation, and critical and investigative thinking to learning experience, which would enable every HIMITES to be confident and competent to pursue a future most suitable to their abilities in any given environment and to actualise their true potentials to transform themselves into effective catalysts in society while upholding the values of the legacy of Wahge Educational Trust which seeks to integrate values of indigenosity with universal values of human coexistence.

TEACHER AT HIMIS

A child is not a thing to be moulded but a being whose possibilities are never fully known, a being who is embedded in nature and every throbbing of it, and unfathomably attached to the social existence and hence, s/he should be guided carefully to discover, develop and to use those possibilities that are in the budding stages. A teacher at HIMIS is therefore a guide, a mentor, and a counsellor.



Teaching Methodology





LOCATION, THE SUI GENERIS

HIM International School is situated at Itanagar, the capital city of Arunachal Pradesh, amidst the amazing elegance of the deep, green but breath taking terrains of this north-eastern frontier state of India. The name Arunachal Pradesh literally means the land of moon-lit mountains, encompassed by a series of foothills in the south extending to the high-rising hills of the Lesser Himalayas northward, and further north to the Tibetan borders.

The vicinities of the school are flanked by the highland plateaus and ridges, and the enthralling music of the burbling waters of the beautiful Siang River which bubbles over the shapely rocks and low-lying branches of trees. This gives the pupils an unparalleled opportunity for experiencing the unique, and oft rare beauty, and a touch of virgin nature, a rare chance for many or most of the children of learning today. Arunachal Pradesh is the cultural state of the territorial India as it is rich with 26 unique tribal communities which again gives one the rarest opportunities to research and learn about the various ethnic diversities in comparison to the other cultural existence. Another very pertinent aspect of the location of the school is Arunachal Pradesh's characteristically distinctive and hitherto unexplored flora and fauna which provide an exceptional opportunity for pupils to blend their learnings with the skills of exploration, discovery, and thus to further their learning activities beyond the school curriculum, all which constitute the sui generis of HIM International School.





LIFE AT HIMIS

Holistic Growth and Development

The school is a co-educational boarding cum day school with excellent facilities like accommodation, games, and support-study-programmes. The living perspective of every child at HIMIS is carefully planned and organized with the view to facilitating holistic growth and development of the pupils. The learning trajectory of pupils is transformative where all the domains of the learning - cognitive, psychomotor and affective, are interconnected.

Value Inculcation Programme (VIP)

The school gives paramount importance to value education which seeks to blend tradition with the present-day social and cultural paradigms. It celebrates nine core values – humility, respect, integrity, empathy, confidence, teamwork, perseverance, accountability, and innovation over an academic year with a variety of programmes and activities.

HIMIS was founded in the year 2017 under the aegis of the Wahge Educational Trust by Engineer Katung Wahge along with his wife and Chairperson of the school Mrs Nannu Wahge with the vision of providing state of art infrastructural facilities for the people of Arunachal Pradesh who are forced to send their children to the far-off campuses as they do not have quality educational facilities at hand. The visionary of the founders also purports to inculcate and purvey the rich values of indigenous culture and traditions while familiarising and integrating the best educational practices of global perspectives.

An Extended Family

HIMIS is a family with the highest priority for family values; the children of HIMIS live in its precinct happily, playing, learning and enjoying the company of their peers and elders. Schooling at HIMIS is life itself and not merely a preparation for life.



HIMIS HOSTEL

A Home Away from Home

I have decided to keep my child at HIMIS boarding because it gives me a sense of proximity and feeling of family. It was not surprising for me to find HIMIS Hostel to be a real home away from home for my son.
-Parent



HIMIS Boarding House is a home away from home for our children. They are attended at all times by resident Housemasters and Housemistresses. A team of teachers always moves along with the children within the campus until they retire for rest which means there is always someone for them, like our homes.

The HIMIS Hostel is never an alternative for a family but an extended family, a comfortable resort for those who need their learning environment a choice. It envisions to provide the best family atmosphere through inculcating close-knit community values based on mutual respect and compassion.

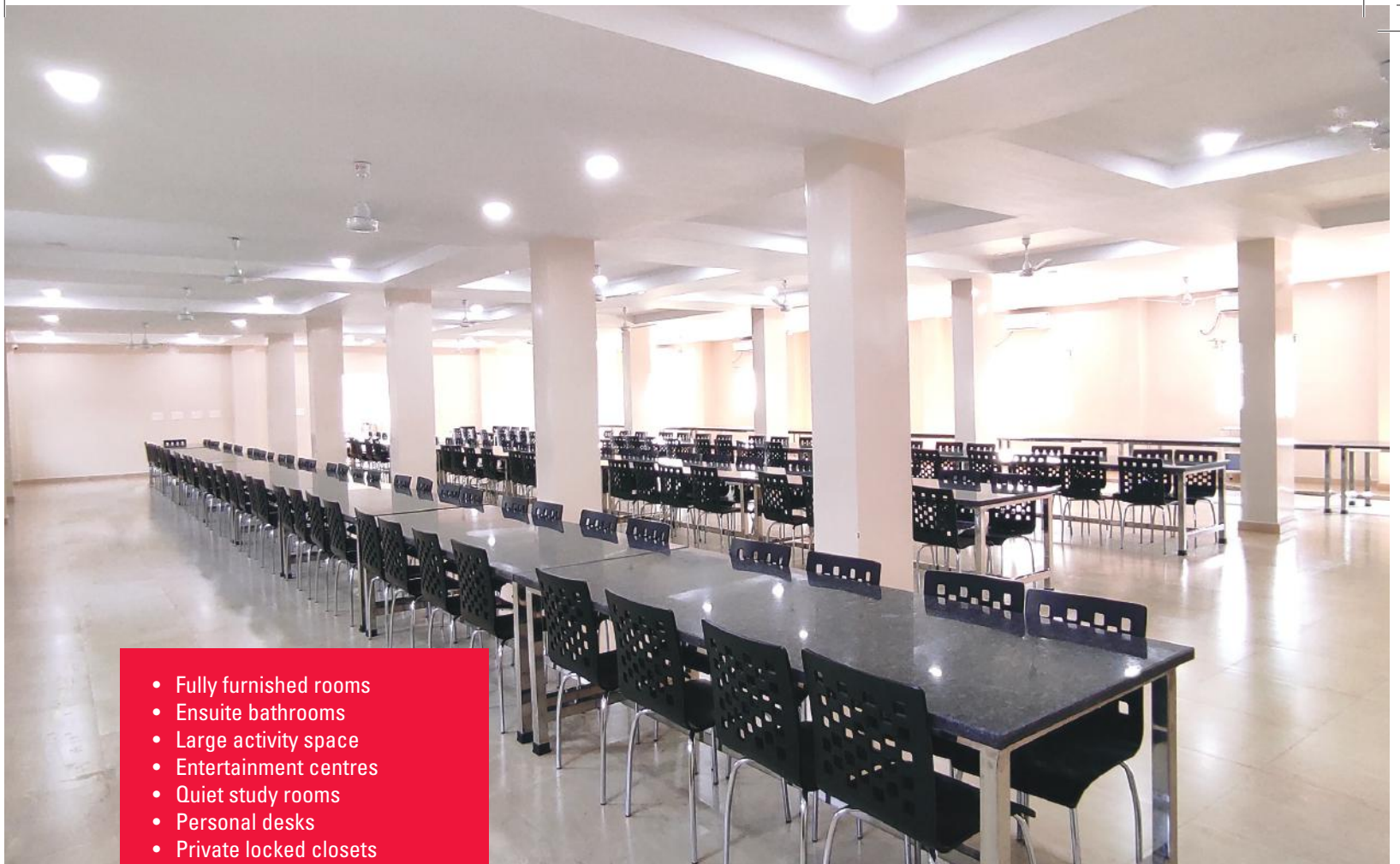
- Disciplined, but articulate
- Confident, yet humble
- Passionate, but polite

The outcome for HIMIS boarders is outstanding. They excel in all the areas of their growth and development. They are adorable in their ambition and express admirable pride in being a HIMITE.



AGE GROUP FOR ADMISSION TO BOARDING HOUSE

Girls			Boys		
Class	1 & 2	(Age 6-8)	Class	1 & 2	(Age 6-8)
Class	3 to 5	(Age 8-11)	Class	3 to 5	(Age 8-11)
Class	6 to 8	(Age 11-14)	Class	6 to 8	(Age 11-14)
Class	9 to 12	(Age 14-18)	Class	9 to 12	(Age 14-18)



- Fully furnished rooms
- Ensuite bathrooms
- Large activity space
- Entertainment centres
- Quiet study rooms
- Personal desks
- Private locked closets
- Laundry facilities
- Fully equipped kitchens
- Dining services

HIMIS International Boarding House has separate buildings for boys and girls. The hostel accommodation is divided into sections; each section is quadruplets with ensuite bathrooms. The building is constructed with a design and layout that extends over 5 floors to provide world-class boarding facilities with natural light, ventilation, well-furnished atrium, social areas, study areas, and spacious dining.

DAY SCHOOLING

HIMIS is a day-cum boarding school and accommodates the day-schooling from KG to Year V. The day-school admissions above Class-V are limited as it wants to cater to each student a high-level of attention and exceptional cognitive, affective, and psychomotor developments.



Stages	Classes	Age Group
Foundational Stage	LKG and UKG	Age 4 - 6
	Class 1 & 2	Age 6 - 8
Preparatory Stage	Class 3 to 5	Age 8 - 11

**DAY SCHOOL
ADMISSION FOR
BOYS AND GIRLS**

CURRICULUM

HIM International School is affiliated to the CBSE and follows the curriculum designed by the NCERT according to the National Education Policy 2020. The educational programmes at HIMIS focus on the all-around development of the individual, and therefore, emphasise a multidimensional approach towards learning which encompasses cognitive, affective, and psychomotor domains. Apart from the cognitive aspects of learning, the HIMIS model of curriculum includes critical attributes such as life-long learning, inculcation of values, development of talents, leadership, and ideas of national and global citizenship, to help maximise the development of the innate potentials of every child and to prepare him or her for their future living.

Foundational Years

Years	Classes	Age Group
Foundational Years	LKG and UKG	Age 4 - 6
	Class 1 & 2	Age 6 - 8

EARLY CHILDHOOD EDUCATION AND CARE					
Classes LKG, UKG, 1 & 2					
Languages		Mathematics	EVS & GK	Music, Dance, Art & Crafts	Sporting Activities
English	Hindi				



Kindergarten to Class II

The school provides strong emphasis on the foundational years as it underlines the importance of appropriate care and stimulation for early years of cognitive, affective, and psychomotor development through play way methods, carefully guided learning activities, experiential learning, and collaborative and reciprocal learning.

Key Features

- Joyful and inciteful learning
- Learning through exploration
- Warm and caring family atmosphere
- Creativity



Methodology of Learning

HIMIS considers education a partnership in which our experienced teachers and carers lead every child to discover and develop their talents through:

- Play/activity-based learning
- Discovery learning
- Problem-solving
- Increased formal interactive learning styles
- Outcome-based reading, writing, & speaking
- Contextualised numerical skills
- Enhancement of physical skills
- Interpersonal learning
- Collaborative learning
- Reciprocal learning

Every child at HIMIS involves and grows into confident and capable individual.

Preparatory Level

The preparatory stage comprises three years of education, framed in line with the play-way, discovery, and activity-based pedagogical and curricular styles of learning incorporating outcome-oriented interactive classroom practices. It aims at laying a solid foundation for all subjects, including reading, writing, speaking, physical education, art, languages, science, social science, and mathematics.

PREPARATORY	
Classes	Age Group
3 to 5	8 - 11



Key Features and Focus

- Interactive learning
- Reading
- Speaking
- Physical education
- Art
- Fluency in languages
- Science
- Mathematics
- Social Science
- Music.
- Environmental studies
- IT and coding

Middle Level

The middle school curriculum is designed to be deeper and broader in all perspectives with subject-based content modules to transform education into competency-based and life-oriented lifelong learning. The strategies of teaching and learning are carefully adopted to cater to the idea of holistic development and to enable students to deal with real-life situations. Experimental learning in mathematics, science, and social science; project-based learnings; research-based year-long studies; development of artistic and literary talents; and training in visual and performing arts are just a few to mention. These strategies not only strengthen pupils' cognitive experience, but also help accelerate their later learnings and give a new and deeper dimension to learning itself.

MIDDLE	
Classes	Age Group
6 to 8	11 - 14



Guided and Self-directed Learning

- Highly experienced and subject-wise experts
- Learning through critical thinking
- Problem-solving and inquiry-based learning
- Interdisciplinary approaches
- Increased hands-on experiential learning in science maths, social sciences, and arts.
- Learning by doing to build conceptual understanding and skills
- Interactive-student centric learning environment
- Artificial intelligence and coding



Secondary Level

At the end of Class 8, the students register with the CBSE Board and follow strictly the curriculum designed by the NCERT according to the National Education Policy 2020.

SECONDARY	
Classes	Age Group
IX, X, XI, XII	14 to 18

At Secondary level HIMIS provides all the three streams:

- SCIENCE
- COMMERCE
- HUMANITIES

However, students will be able to choose their combination as per the modifications brought about by the NCERT congruent with the NEP 2020, which allows them greater flexibility and choice of subjects in deciding their career preferences at the secondary stage.

Features

- Career guidance
- Academic placement counselling
- Academic excellence with 100% results
- Excellence in skills of speaking, group discussion, interview, and leadership

During these years a HIMITE is expected to be ready to continue their learning at any universities around the world.

COUNSELLING

The school recognises the need for and importance of adequate care and guidance throughout the different stages of pupils' development to cope with emerging emotional and intellectual challenges and therefore, provides appropriate expertise in care, guidance, and counselling in most supportive and respectful environment. It includes:

- Academic orientation and counselling
- Early career and vocational guidance
- Counselling for personal and social development
- Emotional and psychological counselling
- Counselling for parents
- Future educational placement and admission guidance



NURTURING CREATIVE EXPRESSION

Catering to the holistic development of its pupils, HIMIS provides the best platform for each pupil. The creative potentials of the pupils are identified well in the initial stage of a HIMITE as s/he joins the school and is given appropriate and systematic training. An array of competitions and activities, spread across the academic calendar, are facilitated for the optimum development of the potentials of the pupils.

- Spelling Bee
- Quiz
- Reading competitions
- Elocution
- Dramatics
- Extempore
- Literary activities
- Drawing & crafts education
- Communication & personality development
- Early identification of aptitudes
- Specialized British accent training
- Gavel Club (Toastmasters International)
- Special coaching for leadership and communication
- Fully equipped music classes - vocal and instrumental
- Western and Indian dance classes
- Photography
- Film making



THE WAY BEYOND AND WITHIN

What makes HIMIS a distinctive school is its blending of excellence in education with that of technology, sports, extra and co-curricular activities. The learning programmes facilitate children with stimulating, and creative environment for the development of multiple dimensions of an individual's potentials which encompasses intellectual, scientific, social, cultural, emotional and physical aspects. A wide spectrum of opportunities is provided for galvanising such a holistic momentum in each individual's life at HIMIS.



Yoga

The school conducts regular Yoga sessions for the students and staff as it is a comprehensive and systematic process of body, mind and soul exercises to help students improve memory functions, attention span, focus, physical flexibilities, breathing, mindfulness, self-confidence and self-esteem.

Art integrated learning is a major feature of the HIMIS curriculum. It is extended to all over the stages of learning and covers major spheres like music, dance, visual arts, theatre and technology enabled art and craft. Music and theatre comprise one of the finest arts and HIMIS provides professional development of these arts – both western and eastern traditions, with specialised full-time trainers.

Interhouse art, literary and cultural competitions, and monthly cultural shows give every student an opportunity to be part of the HIMIS theatrical extravaganza of scintillating visual arts and performance of music, drama, dance, and presenting arts. As students get involved in all the stages of such performance, it provides them a direct experience of professional manoeuvring like scripting, directing, and organising.





Art integrated education helps develop abstract reasoning, and improves learning of mathematics and science. Apart from its health benefits, art enhances higher order thinking, and raises the happiness quotient.



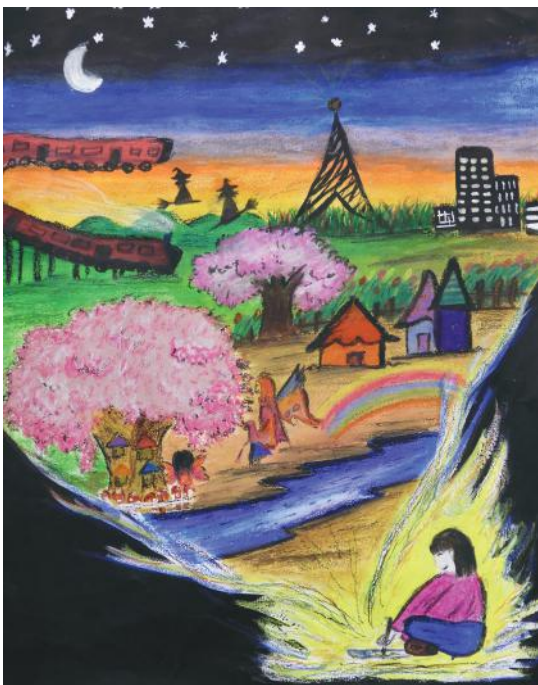


Socio-cultural Celebrations

Celebrations of the international, national, and local festivals are the quintessentials of the cultural life of every HIMITE. It not only makes students enjoy the artistic elements of life, but also becomes the connecting rope to relate their life to the sociocultural richness that surrounds them, to enhance their ability to appreciate diversity, and to develop an attitude towards multiculturalism while valuing the uniqueness of each expression of the social and cultural behaviour.



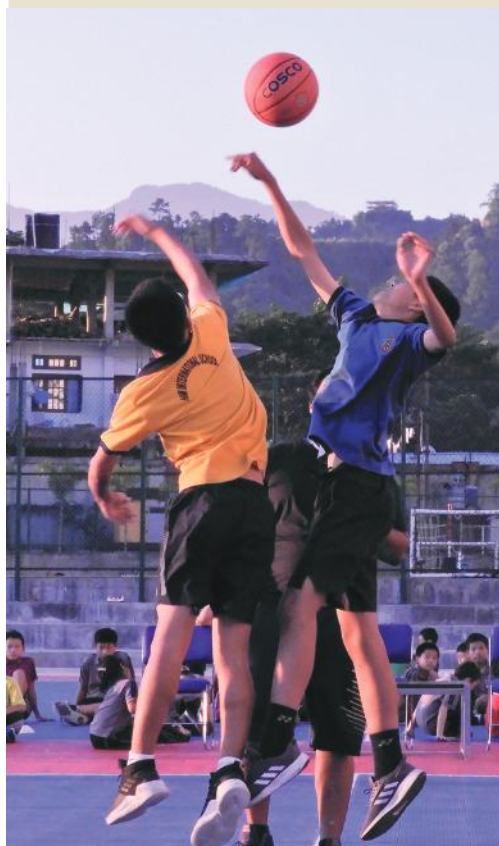
The distinguishing trait of art integrated education at HIMIS is the inclusion of the cultural heritage of Arunachal Pradesh, its heritage-crafts, and aesthetic values.





HOLISTIC DEVELOPMENT: MULTI-SPORTS CULTURE

HIMIS educational policy is formulated incorporating the fundamentals of a sports academy. Sports education as part of our curriculum-design is spread across foundational stage, preparatory stage, middle, and higher-secondary classes. The sports activities at HIMIS are a pleasant experience, a window opening to umpteen professional opportunities. Instead of incongruity, it complements the academic performance because it inculcates qualities like discipline, leadership, honesty, team-spirit, and higher ambition. While the multi-faceted and multi-dimensional sports education at HIMIS is a sign of its recognition of sports as a prime element of the all-round development of its pupils, it also contours a sports pedagogy in its approach and attitude.



Distinguishing features

- Full-fledged courts for all games
- Athletic ground, & sports arena
- Ample time for training
- Specialised sports teachers
- Sports curriculum
- Regional, state, national & international competitions
- Daily sports schedule for training
- Camps for state and national levels

Training Opportunities

- Basketball
- Football
- Volleyball
- Lawn-Tennis
- Table-Tennis
- Badminton
- Cricket
- Athletics
- Chess
- Martial Arts (Karate)
- Swimming
- Kho-Kho





**HIMIS
LIBRARY**

**Reading makes them
what they want to be.**



HIMIS LIBRARY
a place where students meet
their best friends, BOOKS.





A TECHNOLOGY AVANT-GARDE SCHOOL

Located amidst the bounty of nature's blessings that flows unceasingly, HIMIS provides its pupils cutting-edge infrastructural and technological facilities that include spacious and digitalised classrooms and separate labs for all subjects. The infrastructural facilities are regularly upgraded and meet all international standards. Understanding the new paradigms of modern education, HIMIS has incorporated modern systems and technologies in its organisations, including administration, classrooms, labs, teaching and learning, and communication.

Computer Lab

Technology is a major role player in modern's education both as a teaching aid and as a subject of learning. Technology integrated teaching models have increased the demand for efficient use of computer hardware and software in education. HIMIS has from its very inception provided the best avant-garde technology in classrooms, computer labs, and meeting rooms. The features include:

- Technology avant-garde classrooms
- Coding classes
- Artificial Intelligence
- IT and computer science curriculum
- Online and blended classes





At HMIS, we believe that the state-of-art infrastructural and technological resources can facilitate the much needed dynamic learning environment. Seamlessly dedicated teachers are always ready to guide the pupils at every stage of their learning using the digitally powered learning resources.

- Online-school-administration
- Smartboard classrooms
- Artificial intelligence
- Coding classes
- User-friendly school app
- Well-equipped library
- Separate labs for Physics, Chemistry & Biology
- Maths Lab & SST Lab
- Large Computer Lab
- Language Lab
- Amphitheatre
- Multi-purpose auditorium
- Audio-visual room
- Dance room
- Music room
- Arts & crafts room
- 24x7 Nursing facility
- 24 Hours resident doctor



ADMISSIONS

ADMISSIONS are offered to Kindergarten (LKG and UKG), and Classes I to XII subject to availability of seats and eligibility.

Application form

Parents who wish to apply to HIMIS can either download the prospectus and obtain the application form from the school office by paying the prescribed cost directly/online/DD drawn in favour of HIM International School, payable at Itanagar. The application can also be downloaded from the school website (www.himinternationalschool.org).

Admissions to HIMIS are processed through the following organised procedures.

Submit the duly completed application form on or before the stipulated date. The following documents should be submitted along with the completed form:

- Certified copy of the School Report Card of the previous academic year (If applicable)
- Original Transfer Certificate from the previous school (If applicable).
- Five passport size photographs and two stamp size photographs of the applicant
- Two passport size photographs of both the parents and guardians
- Certified copy of the birth certificate
- Certified copies of the Aadhar Cards of the applicant and both the parents and guardians
- All photocopies must be self-attested along with the date of attestation.
- Attested copy of the caste certificate and minority certificate (If applicable).

The original documents of the submitted photocopies should be made available upon request for verification.

The mere submission of an application form does not guarantee admission to the school.

Age criteria for application

Class	Age	Class	Age
Lower Kindergarten (LKG)	4 Years	Class III	8 Years
Upper Kindergarten (UKG)	5 Years	Class IV	9 Years
Class I	6 Years	Class V	10 Years
Class II	7 Years	Class VI-XII	11+ Years and above

Admission test

After the submission of the completed application form, the candidates will be shortlisted for a school admission test.

After the admission test, the candidates are shortlisted according to their scoring.

Certificate verification

When the candidate comes for the admission test, all original documents (whichever is relevant) should be brought to the school for verification.

Face-to-face interaction

The shortlisted candidate will be called for a face-to-face interaction along with their parents and the selected candidate will be informed, and will be called for making the necessary payment.

Additional documents for residential students

Residential students are required to submit the following additional documents: a) Fitness Certificate b) Medical History c) Blood Group Report d) Undertakings and the agreements signed by parents.

Confirmation of admission and payments

On confirmation of the listed candidates, parents will be required to pay the fees on or before the stipulated dates.

Mode of payment

The parents can pay directly at the school office or through online/DD/Cheque/bank transfer.

Non-refundability

Once the payment is done, the admission is considered completed and the payment once done will not be refunded at any time whatsoever. There is no provision for cancellation of admission and refund once the admissions are done.

Food

In the school/hostel both vegetarian and non-vegetarian food will be served.

CONFIDENTIALITY AND WAIVER

All communications to and from the school are expected to be confidential and true to the best of the knowledge of the parents. The school will not be liable for any expenditure incurred on account of illness/injuries sustained by the child during his or her stay at the school.

**CHILDREN,
ENTRUST THEM TO US
WE WILL GIVE THEM
THE WINGS OF TOMORROW**



CAMPUS

- 📍 Jollang (III), Daath Village, Itanagar
Arunachal Pradesh-791113
- 🌐 www.himinternationalschool.org

ADMISSION ENQUIRIES

- ☎ +918132886528, 9436433253
contact@himinternationalschool.com

JOB OPENINGS

- ✉ contact@himinternationalschool.com